

Short-Term Rentals and Lodging News in Lake Tahoe

March 24, 2023 / By Katy Black, MAI

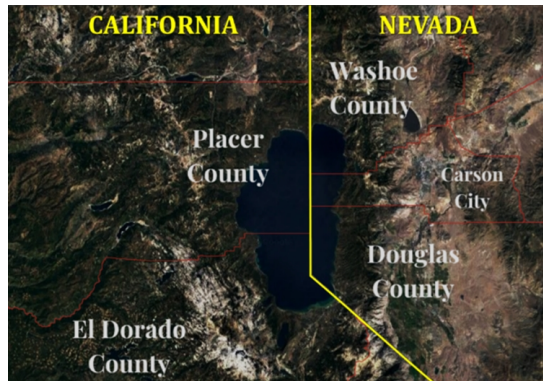


Lake Tahoe's economy is anchored by the tourism industry, which experienced significant growth post-COVID given its proximity to major cities such as Sacramento, San Francisco, and Reno, as well as the array of outdoor activities. The Lake Tahoe Basin is home to a growing population of year-round residents, and the popularity of second homes and investment properties in the area has resulted in soaring home prices and an affordable housing crisis. To preserve the area's natural beauty, local governments and the **Tahoe**

Regional Planning Agency have implemented strict development and short-term rental restrictions. Despite these restrictions, several lodging redevelopments are underway, which are expected to reshape the mix of lodging supply going forward, particularly in the luxury segment.

Lake Tahoe Short-Term-Rental Ordinance Updates

The regulations surrounding short-term rentals (STRs) of vacation-home rentals (VHRs) in the four counties that encompass Lake Tahoe vary greatly. As illustrated on the map below, the Nevada counties of Douglas and Washoe lie to the east of the lake, while the California counties of Placer and El Dorado are located to the west of the lake. These counties' differences in regulation have a significant impact on the local housing market and the communities in which these rentals exist.



Source: Google Maps

Douglas County

In Nevada, Douglas County (which includes the cities of Stateline, Zephyr Cove, and Glenbrook) has a VHR permit cap of 600 and limits the number of vacation-home rentals in detached-residence communities to 15% and in tourist/multi-residence communities to 20%. This cap, which went into effect mid-year 2021, helps to ensure that a balance is maintained between residential and vacation-home rentals, avoiding the over-commercialization of certain areas. However, it may also limit the supply of available rentals and raise prices for those that are available.

El Dorado County

El Dorado County in California (outside of South Lake Tahoe city limits) has a VHR permit cap of 900 and requires a 500-foot buffer between vacation-home rentals, which was introduced in October 2021. This regulation aims to minimize the impact of vacation-home rentals on residential communities and reduce the risk of nuisance from overcrowding and noise. However, it may also limit the number of available rentals and make it difficult for

Summary

The four counties surrounding Lake Tahoe are experiencing a significant boom in tourism and residential sales; however, affordable housing remains a concern. This article explores the restrictions on short-term rentals, the new lodging supply, and the new event center, which are key changes for the Lake Tahoe Basin.

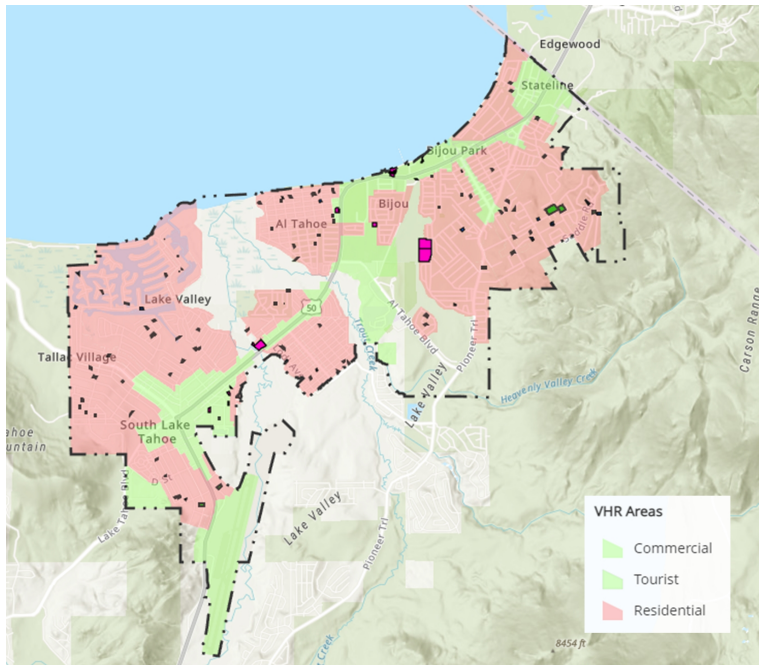
[Comments](#)

FILED UNDER CATEGORIES

- Hotel Operations
- Development & Construction
- Travel & Tourism
- Economic Trends and Cycles
- South Lake Tahoe
- Nevada
- United States
- North America
- Tahoe City
- California
- Kings Beach
- Stateline
- Zephyr Cove
- Glenbrook

property owners to rent out their homes.

The City of South Lake Tahoe prohibits STRs in the pink-shaded areas shown on the map below.^[1] This policy was implemented in late 2018. As shown, nearly all of the neighborhoods and residential areas are not eligible. STRs are still permitted in the tourist core and more commercial areas, which are indicated by the green shading.



Source: **City of South Lake Tahoe Vacation Home Rental Map Series**

Placer County

Placer County, California (including the cities of Northstar Village, Kings Beach, and Tahoe City) has a much higher permit cap of 3,900. This allows for a greater number of vacation-home rentals, providing more choices for tourists and generating more revenue for local communities. However, a significant housing crisis for the local workforce in Eastern Placer was caused by the shortage of affordable long-term rental opportunities. According to the **Eastern County Short-Term Rental Economic Study**,^[2] from 2010 to 2021, there was a 43% increase in STR units in this area, a 47% increase in condotel/timeshares, and roughly no change in hotel/motel units. Placer County is optimistic that the adoption of a new STR ordinance in February 2022 will safeguard homeowners and resolve any nuisances caused by STR operations.

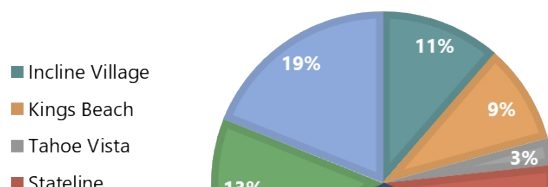
Washoe County

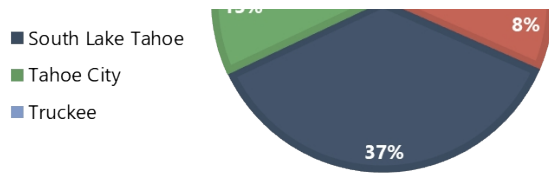
Washoe County in Nevada on the northeast side of the lake has the most permissive regulations, with no cap on the number of STR permits. This “free market” approach to the STR industry allows supply and demand to dictate the number of rentals available. This policy can lead to a higher number of rentals and greater revenue for local communities but can also have a negative impact on the quality of life in residential areas because of over-commercialization and overcrowding.

Short-Term Rental Supply

The following charts illustrate the mix of supply (listing nights) between the primary rental cities around the lake, as well as the change in listing nights for each city over the past five years.

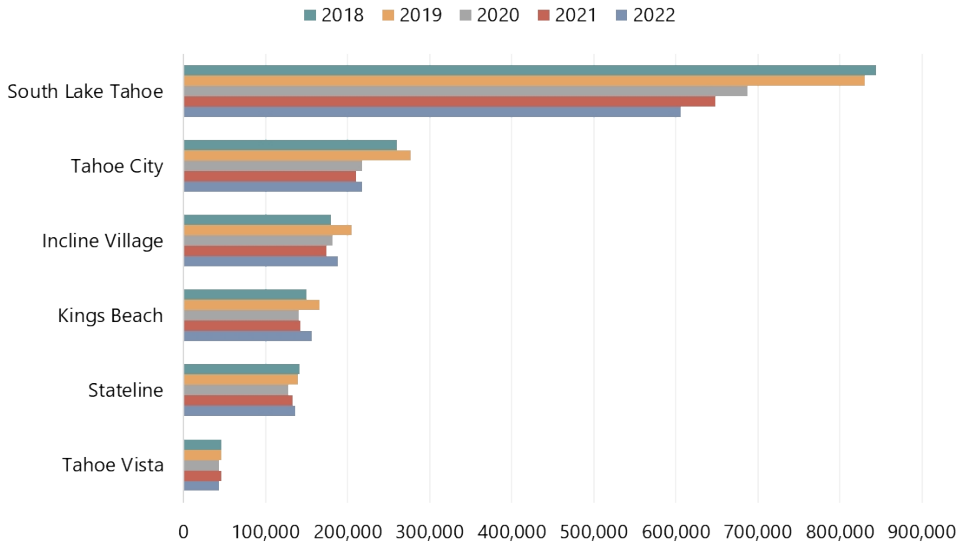
2022 Lake Tahoe STR Supply (Listing Nights) by City





Source: AirDNA

Change in Listing Nights from 2018–2022



Source: AirDNA

The largest decline in STR supply by far has occurred in South Lake Tahoe. Since 2018, the number of available listing nights in South Lake Tahoe has declined nearly 30%, which is strongly tied to the increase in restrictions discussed earlier. The changes in other cities are less significant; however, some area restrictions have recently been implemented. Despite the stagnant or lower supply levels, the average annual rate of change for STR demand from 2018 to 2022, as reported by **AirDNA**, is over 3% for all cities except South Lake Tahoe, which is 0%.

Short-Term Rental Conclusion

The differences in STR regulation between the four counties of Lake Tahoe can have significant impacts on the local housing market and the communities in which these rentals exist. Balancing the need for revenue with the well-being of residential communities is a complex issue, and each county has taken a unique approach to addressing it. The restrictions, or lack of restrictions, on STRs will ultimately affect underlying values and limit growth within this sector.

Lake Tahoe Lodging Boom

Waldorf Astoria Lake Tahoe

The proposed **Waldorf Astoria Lake Tahoe Resort & Residences** will feature 76 guestrooms and 61 residences, occupying the 15 acres previously held by the Tahoe Biltmore Lodge & Casino. This site is located on the north side of Lake Tahoe in the community of Crystal Bay. The property is expected to feature a three-acre beach club and mountain club at Northstar Village, as well as transportation to nearby attractions. This project also includes a requirement for deed-restricted workforce housing for 38 individuals. Groundbreaking has been announced for 2023, with completion slated for 2027.



Edgewood Tahoe

The expansion project at **Edgewood Tahoe**, which is a 250-acre



lakefront resort in Stateline, Nevada, is well underway. Half of the proposed 14 multi-bedroom villas were completed in late 2022, with the remainder slated for completion mid-year 2023. These villa suites range in size from 1,875 to over 4,000 square feet and are designed to provide guests with the ultimate Lake Tahoe experience, as each room faces the stunning shoreline of South Lake Tahoe. This expansion is expected to meet the needs of luxury multi-generational travelers or those seeking a more exclusive experience. With the resort's location near the **Tahoe Blue Center** (under construction) and its onsite facilities and amenities, such as golfing, the resort is well positioned to continue catering to the luxury traveler on the south shore.



Tahoe City Lodge

Tahoe City Lodge is a fully approved resort hotel that has been highly anticipated, as it marks the first new hotel development within Tahoe City in the last 50 years. The full-service resort hotel will feature a total of 40 hotel rooms and 65 condominiums, offering stunning views of the lake and easy access to the mountains and the beach. Set to break ground in the spring of 2023, the Tahoe City Lodge is expected to bring new energy to this community on the west shore. Completion is slated for 2024/25.



Proposed Kings Beach Resort (39°N)

Situated in the heart of Kings Beach, California, **39°N** will feature a total of 153 hotel units, 10,500 square feet of restaurant and retail space, as well as a large community outdoor gathering space. The resort will also include 74 workforce rental housing units reserved for locals serving the Tahoe Truckee Unified School District, as well as 36 three- and four-bedroom townhomes for purchase. The design is expected to be "mountain modern," with encouraged walkability throughout the complex. The brand (if any) and asset class of the hotel, as well as a timeline, have yet to be announced.



Cal Neva Resort

In April 2023, the former Cal Neva Resort, which has been closed since 2013, was acquired. Situated on the state line in the city of Crystal Bay on the north side of the lake, the resort will be redeveloped and repositioned as a **Proper**-branded hotel. Specific programming and a timeline for the redevelopment have not been announced; however, the redeveloped luxury resort, which will likely feature more than 200 rooms, will focus on wellness, recreation, and entertainment, as well as a sense of community through various lounges, social hubs, and dining outlets.

Tahoe Blue Center

The **Tahoe Blue Center** is a much-anticipated event center in Stateline, Nevada, on the southeast side of the lake. Construction began in 2020, and the center is slated to open in July 2023. It is expected to have a significant impact on the local economy thereafter. The \$100-million facility is expected to host up to 130 events per year, attracting visitors from around the world. The permit for the center only allows major events and conventions during the shoulder seasons when hotel occupancies are low, which will support existing hotels but not necessarily create the need for additional tourist accommodations.



The Tahoe Blue Center will boast a modern and versatile design, featuring 5,500 seats and 10,000 square feet of meeting space. This design will make the facility ideal for hosting a wide variety of events, from concerts and sports games to conventions and trade shows. The center's versatility and capacity will be major draws.

According to the **Tahoe Douglas Visitors Authority**, the center is expected to increase annual room-tax revenues between \$810,600 and \$1.2 million for Douglas County. The county is also anticipating an increase of \$200,000 to \$300,000 in annual sales-tax revenue.

Looking Forward

With STR restrictions increasing, condo-hotels are slated to be an alternate option for potential second homeowners or investors seeking to generate income from residential real estate in this region. A significant number of new hotels or condo-hotels, which are typically not subject to county or city STR restrictions, should support the growing tourism generated by projects such as the Tahoe Blue Center, as STR supply will likely remain stable or decline in the near term.

^[1] City of South Lake Tahoe, **Vacation Home Rentals (VHRs)**. Retrieved 2/16/2023.

^[2] **Eastern County Short-Term Rental Economic Study**, Page 53

About **Katy Black, MAI**



Katy Black, MAI, is the Managing Director and Leader of the consulting and valuation practice of the Denver office. She is an appraisal and consulting expert in the lodging markets throughout the Western U.S. Since joining HVS in 2013, Katy has gained diverse experience spanning limited-service motels, city-center hotels, luxury assets, golf resorts, and mixed-use developments, as well as resort-residential and rental-management programs. She specializes in high-end, complex resorts and has provided valuation and consulting services for gaming assets and large hotel portfolios. In addition, Katy has worked extensively on unique lodging properties, such as glamping resorts, casino hotels, hostels, and waterpark resorts. Katy graduated from the University of Delaware with an honors BS in Hotel, Restaurant, and Institutional Management. She also earned an MS in Accounting from the University of Akron. She is a state-certified general appraiser and a Designated Member of the Appraisal Institute (MAI). Contact Katy at (970) 305-2229 or [\[email protected\]](#).